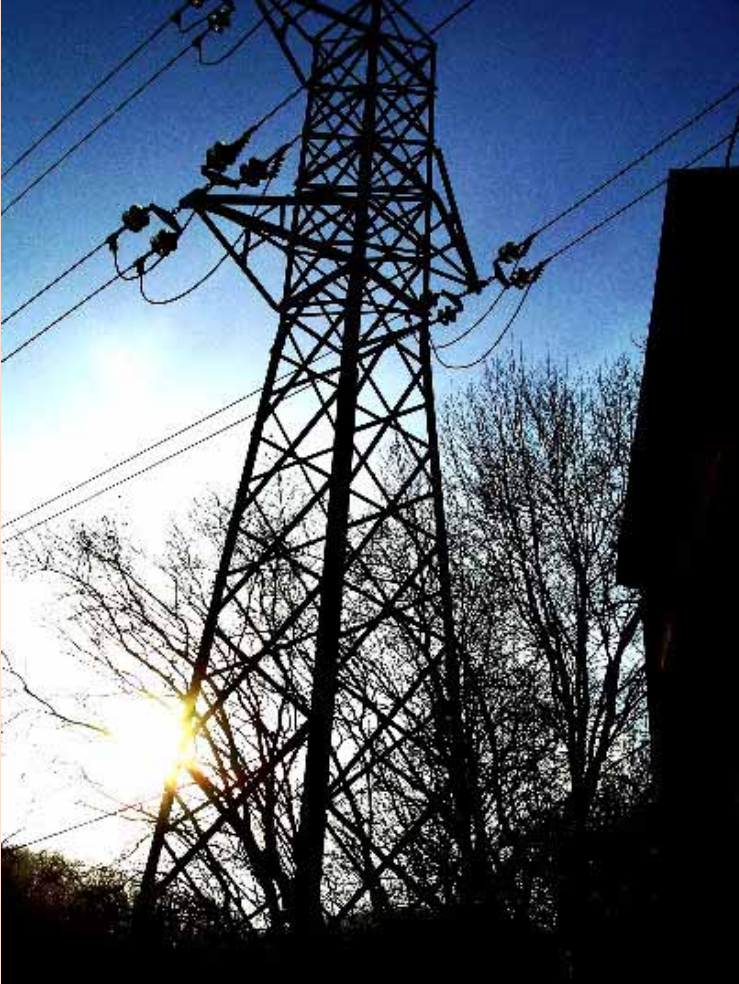


MAINTENANCE OF HIGH-VOLTAGE POWER NETWORKS AND SYSTEMS.

This maintenance constitutes the “backbone” of S.T.&M.’s activity. All other activities that S.T.&M. performs derive mainly from this one.



Continuity of the power supply for any industrial activity is of paramount importance.

Consequently, the design and the assembly of installations and the quality of the materials and equipment are extremely important.

In spite of a good start-up, an interruption of power due to a failure somewhere in the system can occur.

The resulting damage could be serious.

To prevent this from happening, a proper **maintenance** of electrical power distribution systems (specially **high-voltage** ones) must be perfectly developed.

Therefore, highly specializing professionals and adequate equipment that follow verified procedures are absolutely necessary.

That S.T.&M. complies with previously described procedures could be verified by our many clients' references.

They continue to entrust S.T.&M., year after year, the maintenance of their high-voltage systems; from the smallest transformer substation up to the highest voltage system.



Predictive, preventive, and corrective maintenance techniques are applied to all the elements of the system, such as:

- **Power transformers.**
- **Instrument transformers.**
- **Protective relays.**
- **Switchgears.**
- **Powering cables.**
- **Grounding grids.**
- **Isolators.**
- **Arresters.**
- **Measurement equipment.**
- ...

Although high-voltage maintenance works must be done on completely or partially de-energized systems, S.T.&M. is always flexible and adapts its working procedures to the necessities of individual companies.



S.T.&M. provides a **24 Hours Hotline Emergency Service:**

689 23 49 70 (Vizcaya)

646 96 83 60 (Burgos)

646 96 83 61 (Burgos)



When maintenance services are completed, S.T.&M. provides an extensive report containing the recommendations for the best maintenance of the system according to the results of the measurements and checkings.

